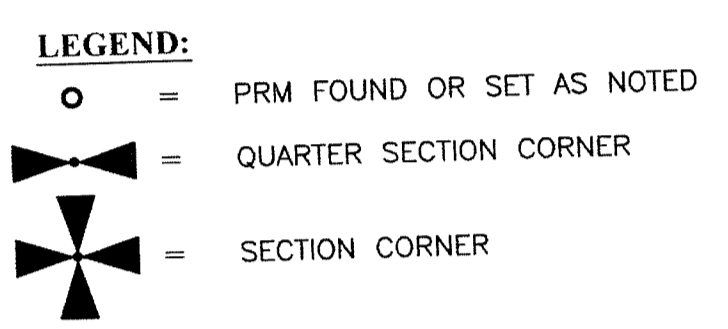
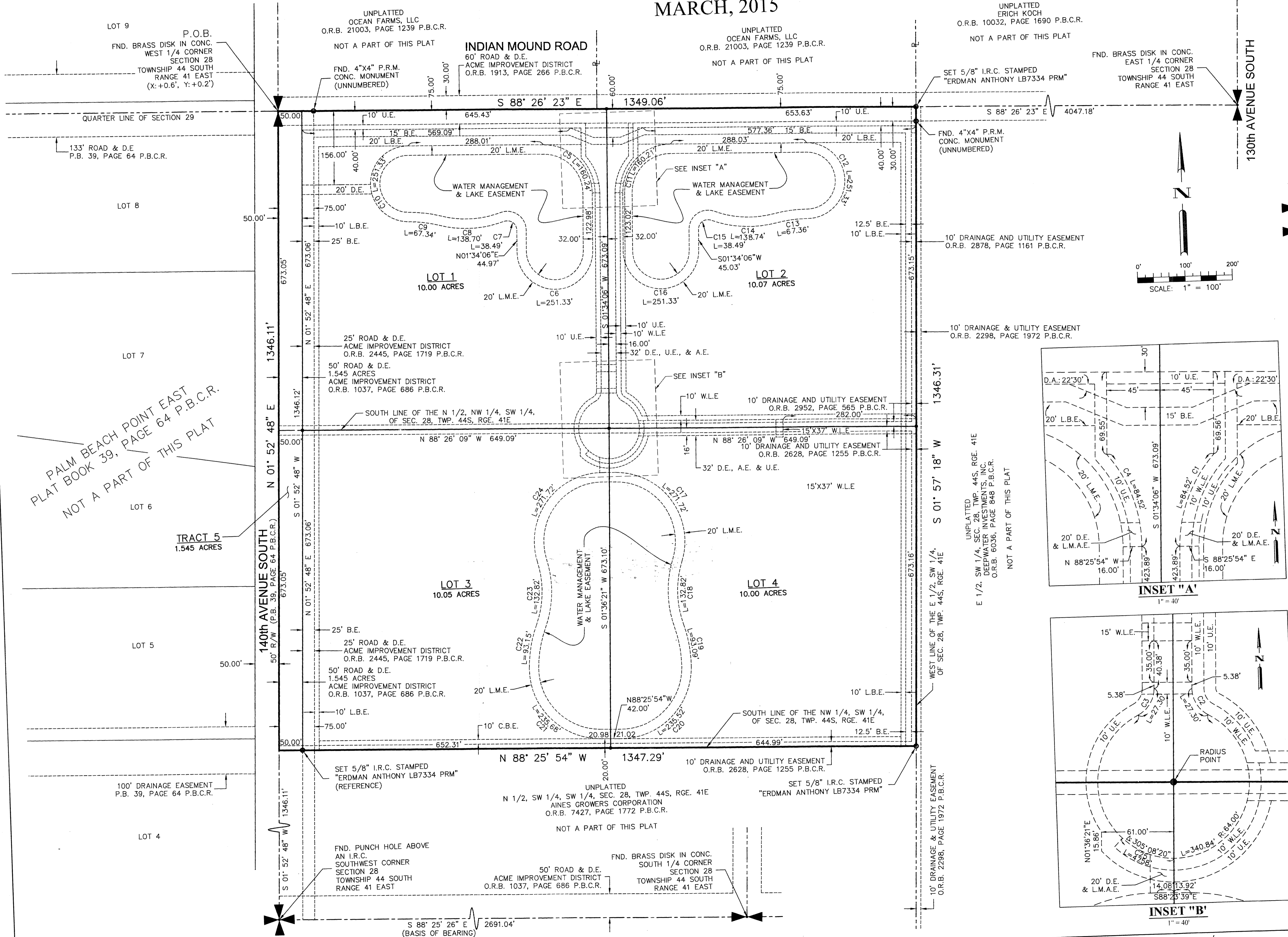


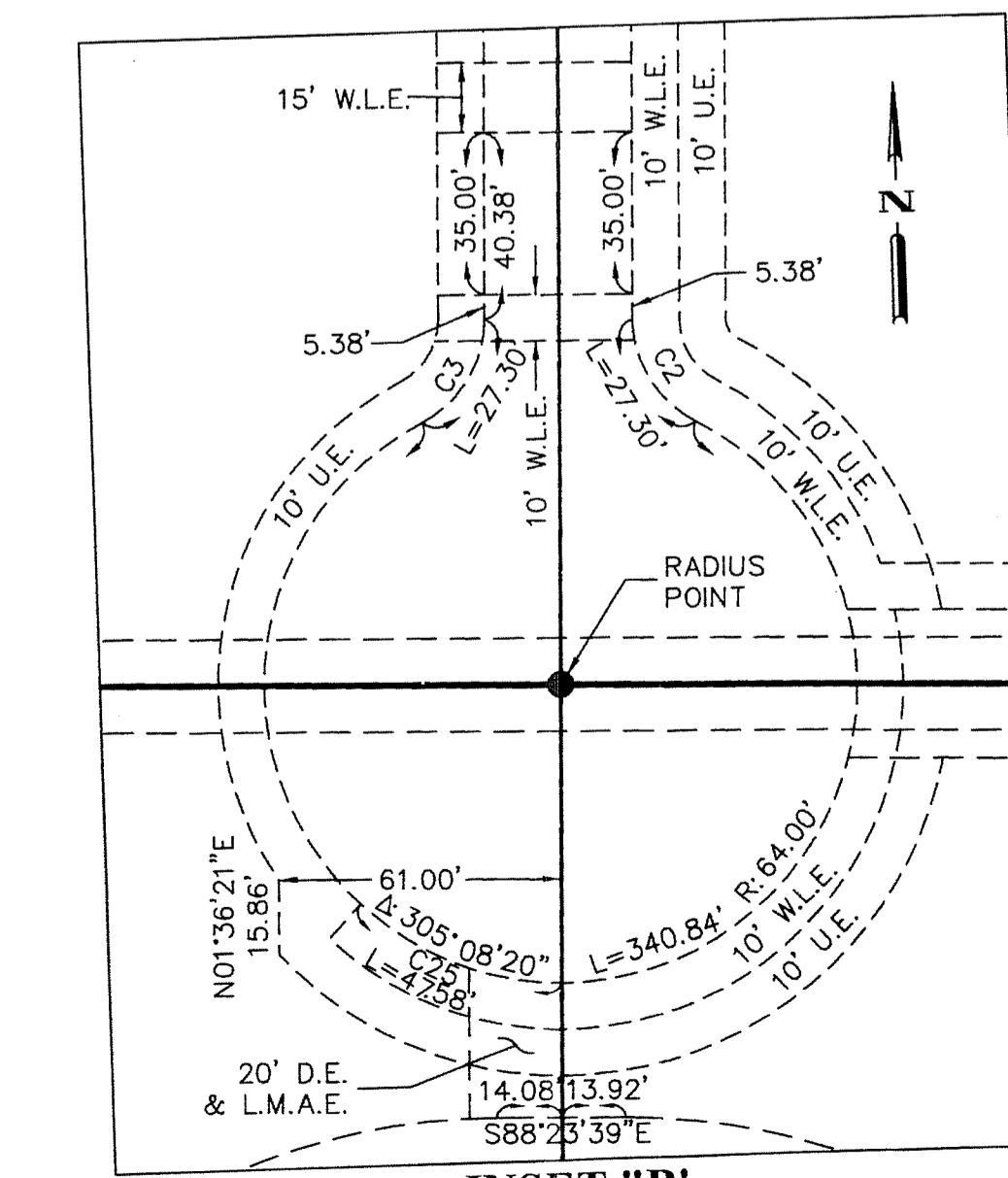
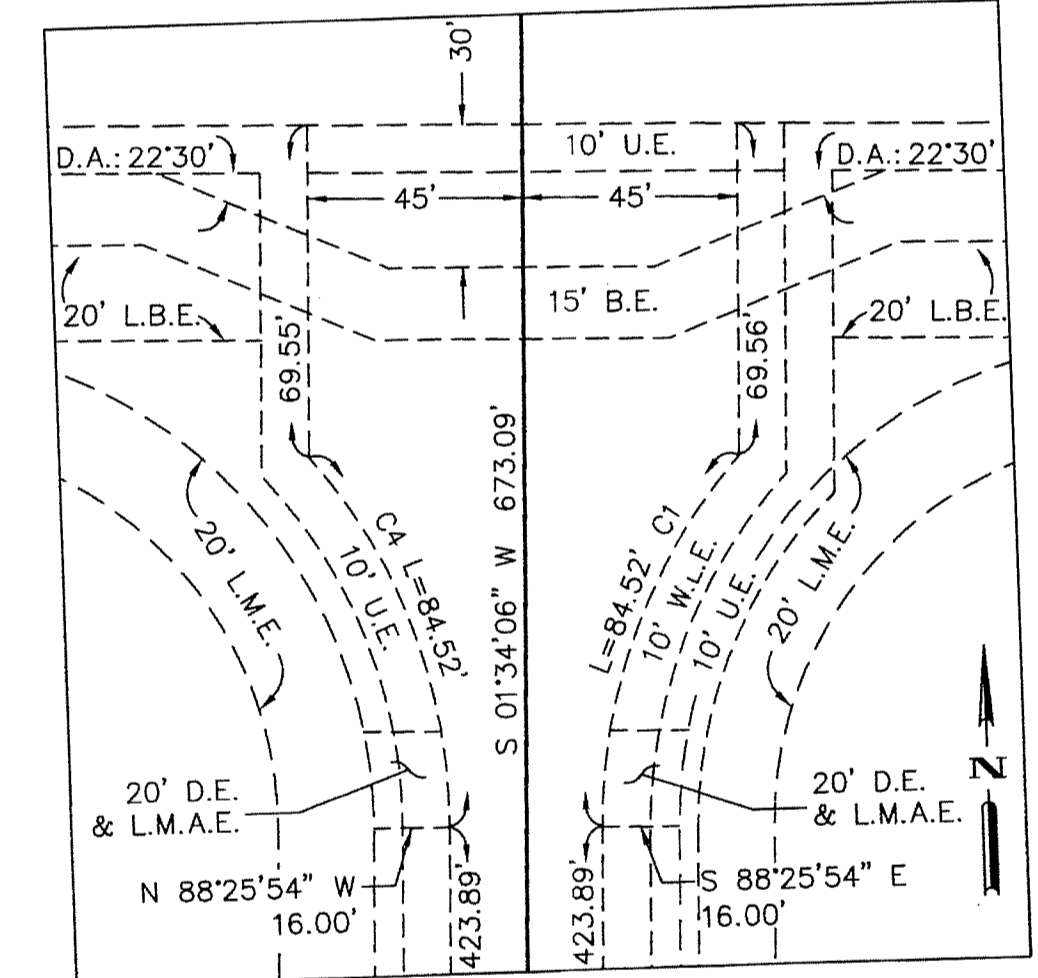
WINDSOME ESTATES

BEING A PORTION OF SECTION 28, TOWNSHIP 44 SOUTH, RANGE 41 EAST
VILLAGE OF WELLINGTON
PALM BEACH COUNTY, FLORIDA
MARCH, 2015



ABBREVIATIONS:

- A.E. = ACCESS EASEMENT
- B.E. = BRIDLE EASEMENT
- C.B.E. = COMPATIBILITY BUFFER EASEMENT
- CONC. = CONCRETE
- Δ = DELTA
- D.A. = DEFLECTION ANGLE
- D.E. = DRAINAGE EASEMENT
- FND. = FOUND
- I.R. = IRON ROD
- I.R.C. = IRON ROD WITH CAP
- L = ARC LENGTH
- LB = LICENSED BUSINESS
- L.B.E. = LANDSCAPE BUFFER EASEMENT
- L.M.A.E. = LAKE MAINTENANCE ACCESS EASEMENT
- L.M.E. = LAKE MAINTENANCE EASEMENT
- NO. = NUMBER
- O.R.B. = OFFICIAL RECORD BOOK
- P.B. = PLAT BOOK
- P.B.C.R. = PALM BEACH COUNTY RECORDS
- R = PROPERTY LINE
- P.O.B. = POINT OF BEGINNING
- PRM = PERMANENT REFERENCE MONUMENT
- PSM = PROFESSIONAL SURVEYOR & MAPPER
- R. = RADIUS
- RGE. = RANGE
- R/W = RIGHT-OF-WAY
- SEC. = SECTION
- TWP. = TOWNSHIP
- U.E. = UTILITY EASEMENT
- W.L.E. = WATERLINE EASEMENT
- W/ = WITH



CURVE DATA

CURVE	ARC LENGTH	RADIUS	DELTA ANGLE
C1	84.52'	118.00'	41°02'28"
C2	27.30'	25.00'	62°34'10"
C3	27.30'	25.00'	62°34'10"
C4	84.52'	118.00'	41°02'28"
C5	160.24'	102.00'	90°00'29"
C6	251.33'	80.00'	180°00'00"
C7	38.49'	20.00'	110°16'15"
C8	138.70'	230.00'	34°33'11"
C9	67.34'	270.00'	14°17'25"
C10	251.33'	80.00'	180°00'00"
C11	160.21'	102.00'	89°59'31"
C12	251.33'	80.00'	180°00'00"
C13	67.36'	270.00'	14°17'37"
C14	138.74'	230.00'	34°33'39"
C15	38.49'	20.00'	110°16'02"
C16	251.33'	80.00'	180°00'00"
C17	271.72'	145.00'	107°22'00"
C18	132.82'	205.00'	37°07'18"
C19	93.09'	270.00'	19°45'18"
C20	235.52'	150.00'	89°57'45"
C21	235.68'	150.00'	90°01'28"
C22	93.15'	270.00'	19°46'05"
C23	132.82'	205.00'	37°07'18"
C24	271.72'	145.00'	107°22'01"
C25	47.58'	64.00'	42°35'39"